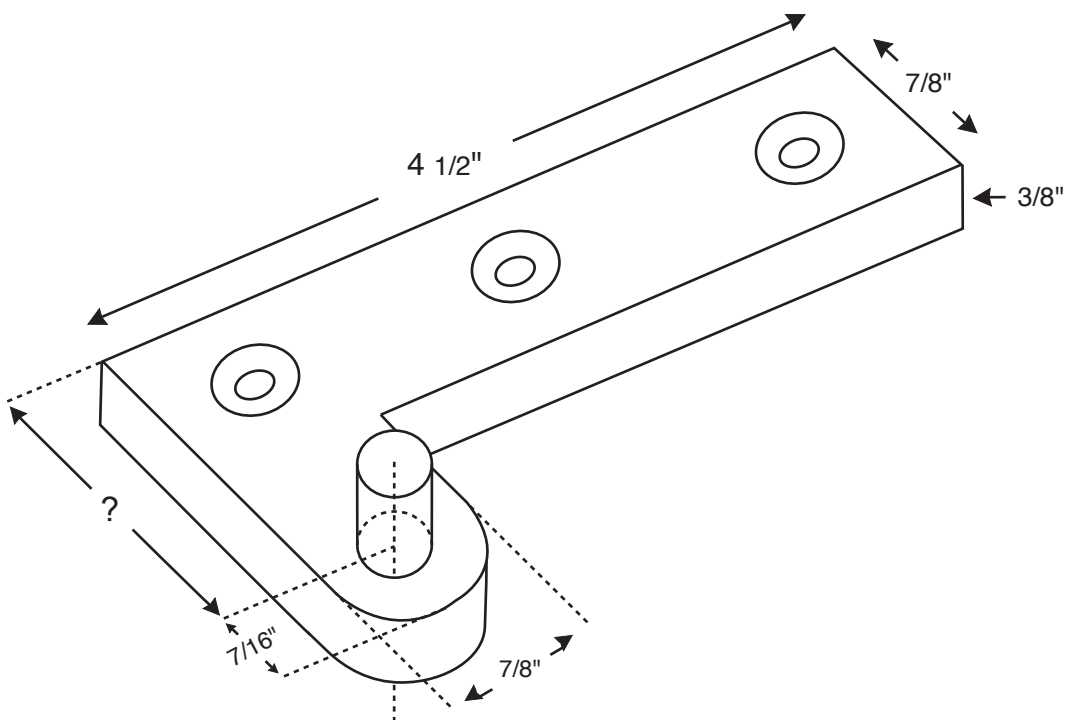


B1



RIGHT HAND SHOWN
Screw: 1 1/4 X 12

THRUST BEARINGS AND/OR
NEEDLE BEARINGS ADDED FOR
EXCESSIVE WEIGHT AND HEIGHT

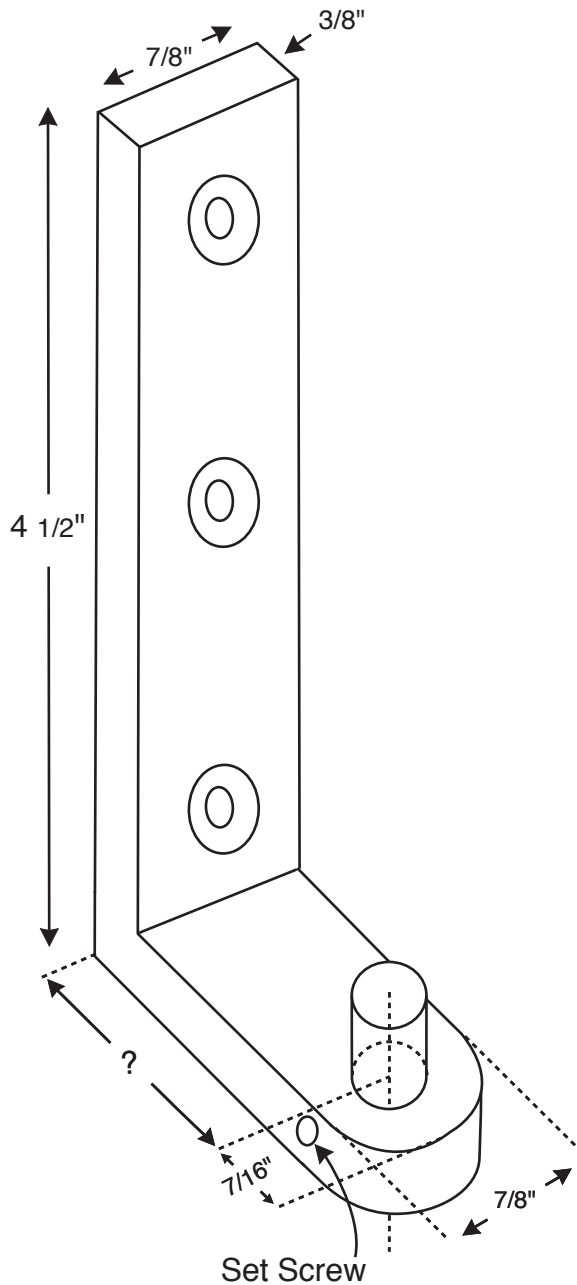
(?) Projection Determined by Job Condition

ALTERNATE FOR DOORS OVER 200 lbs.
IS 1/2" X 1" STOCK - 1 1/2" X 14 SCREWS

ALL PIVOTS ARE MADE TO ORDER
AND TO SUIT JOB CONDITION

B1 - Floor or Sill Offset Pivot Portion

B2/B2i



May be used as intermediate

(See T4 / T4i)

REVERSE OF T4

THRUST BEARINGS AND/OR
NEEDLE BEARINGS ADDED FOR
EXCESSIVE WEIGHT AND HEIGHT

THIS PIECE SHOULD REST
FLOOR OR BASE

LEFT HAND SHOWN
Screw: 1 1/4 x 12

(?) Projection Determined by Job Condition

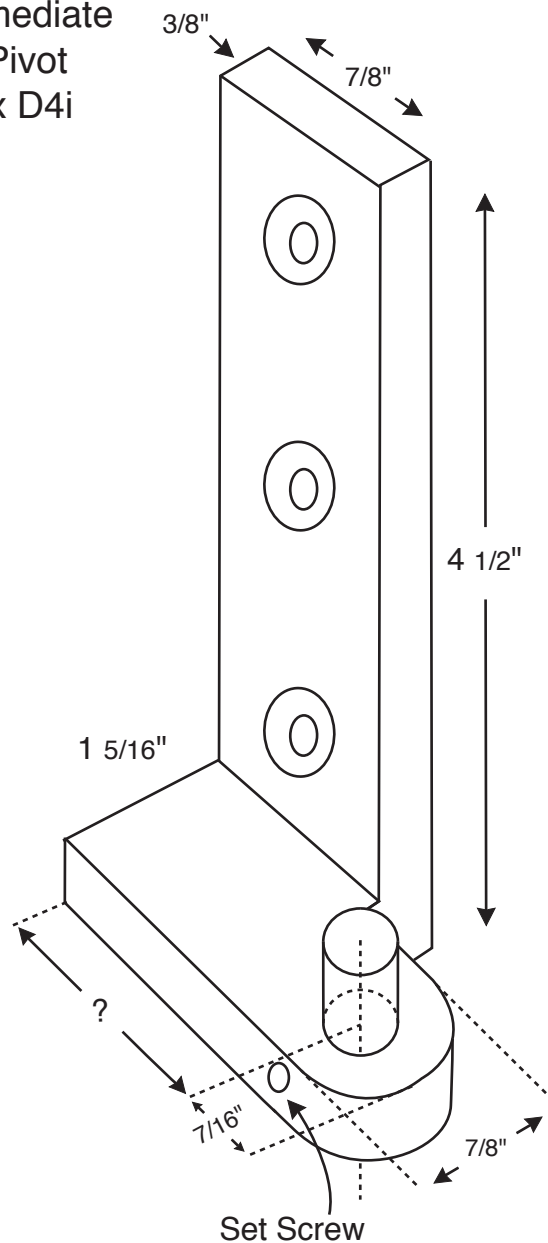
ALTERNATE FOR DOORS OVER 200 lbs.
IS 1/2" X 1" STOCK - 1 1/2" X 14 SCREWS

ALL PIVOTS ARE MADE TO ORDER
AND TO SUIT JOB CONDITION

B2/B2i - Bottom Back Jamb Pivot Portion

B3 / B3i

B3i Is Used With D4i
 As An Intermediate
 Side Jamb Pivot
 Set As: T5i x D4i



(See T5 / T5i)
 REVERSE OF T5

THRUST BEARINGS AND/OR
 NEEDLE BEARINGS ADDED FOR
 EXCESSIVE WEIGHT AND HEIGHT

THIS PIECE SHOULD REST
 FLOOR OR BASE

LEFT HAND SHOWN
 Screw: 1 1/4 x 12

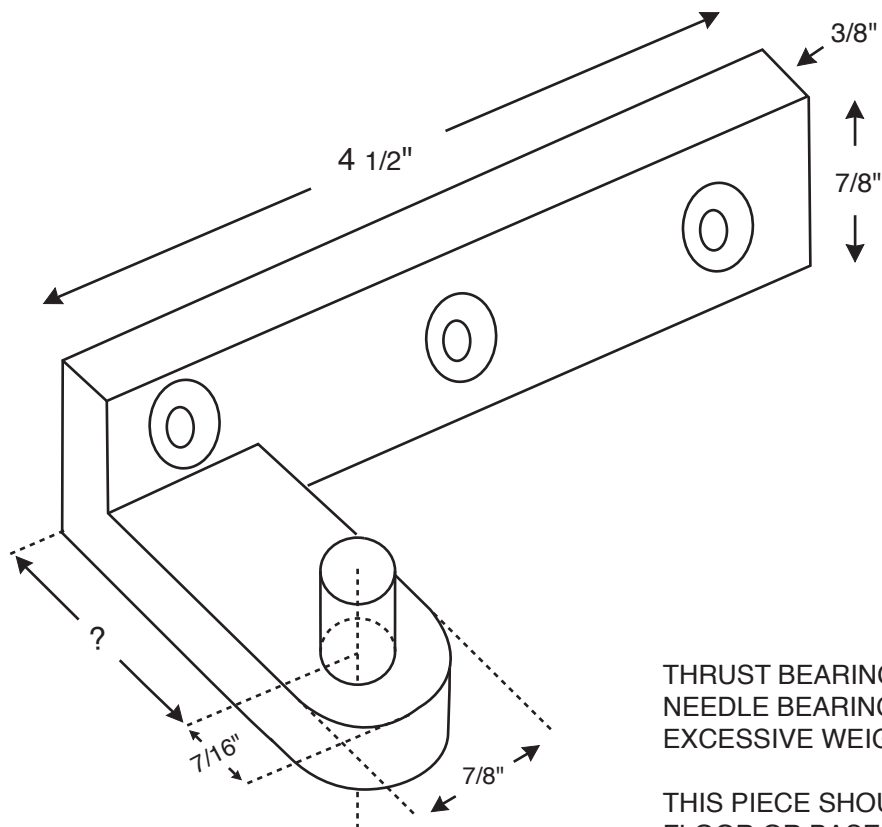
(?) Projection Determined by Job Condition

ALTERNATE FOR DOORS OVER 200 lbs.
 IS 1/2" X 1" STOCK - 1 1/2" X 14 SCREWS

ALL PIVOTS ARE MADE TO ORDER
 AND TO SUIT JOB CONDITION

B3/B3i - Bottom Side Jamb Pivot Portion

B4



THRUST BEARINGS AND/OR
NEEDLE BEARINGS ADDED FOR
EXCESSIVE WEIGHT AND HEIGHT

THIS PIECE SHOULD REST ON
FLOOR OR BASE

RIGHT HAND SHOWN
Screw: $1\frac{1}{4}$ x 12

(?) Projection Determined by Job Condition

ALTERNATE FOR DOORS OVER 200 lbs.
IS $1\frac{1}{2}$ " X 1" STOCK - $1\frac{1}{2}$ " X 14 SCREWS

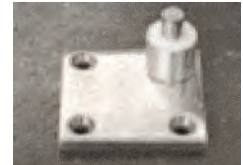
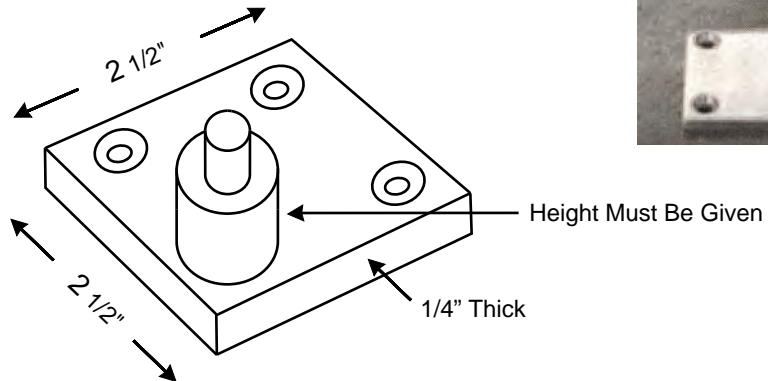
ALL PIVOTS ARE MADE TO ORDER
AND TO SUIT JOB CONDITION

B4 - Bottom Pivot Portion

CFP

Carpet Floor Plate

Height of Carpet
 Required

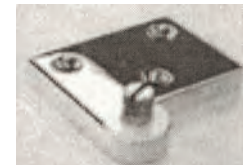
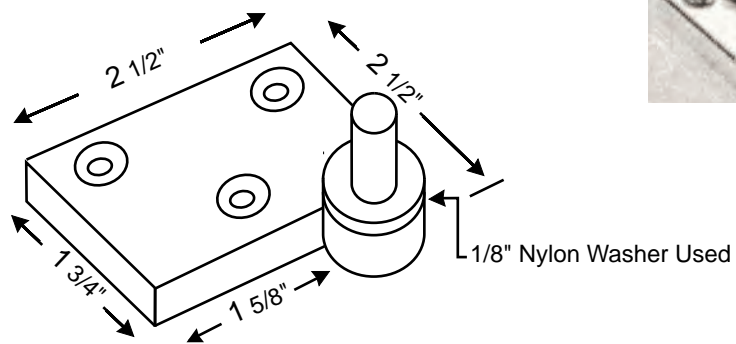


Also Made For 1/2" X 1" Heavy Duty Pivots

WFP

Wood Floor Plate

Undercut of door
 Required

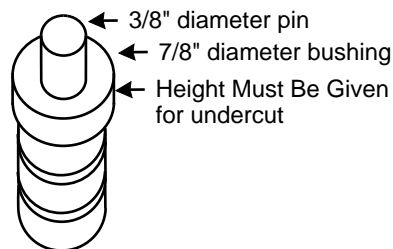


Also Made For 1/2" X 1" Heavy Duty Pivots

STUD

Stone, Marble, Tile, Concrete, Wood

Undercut of door
 Required



Also Made For 1/2" X 1" Heavy Duty Pivots

Wood Floor Plate, Carpet Floor Plate, Stud for Stone, Marble or Wood.